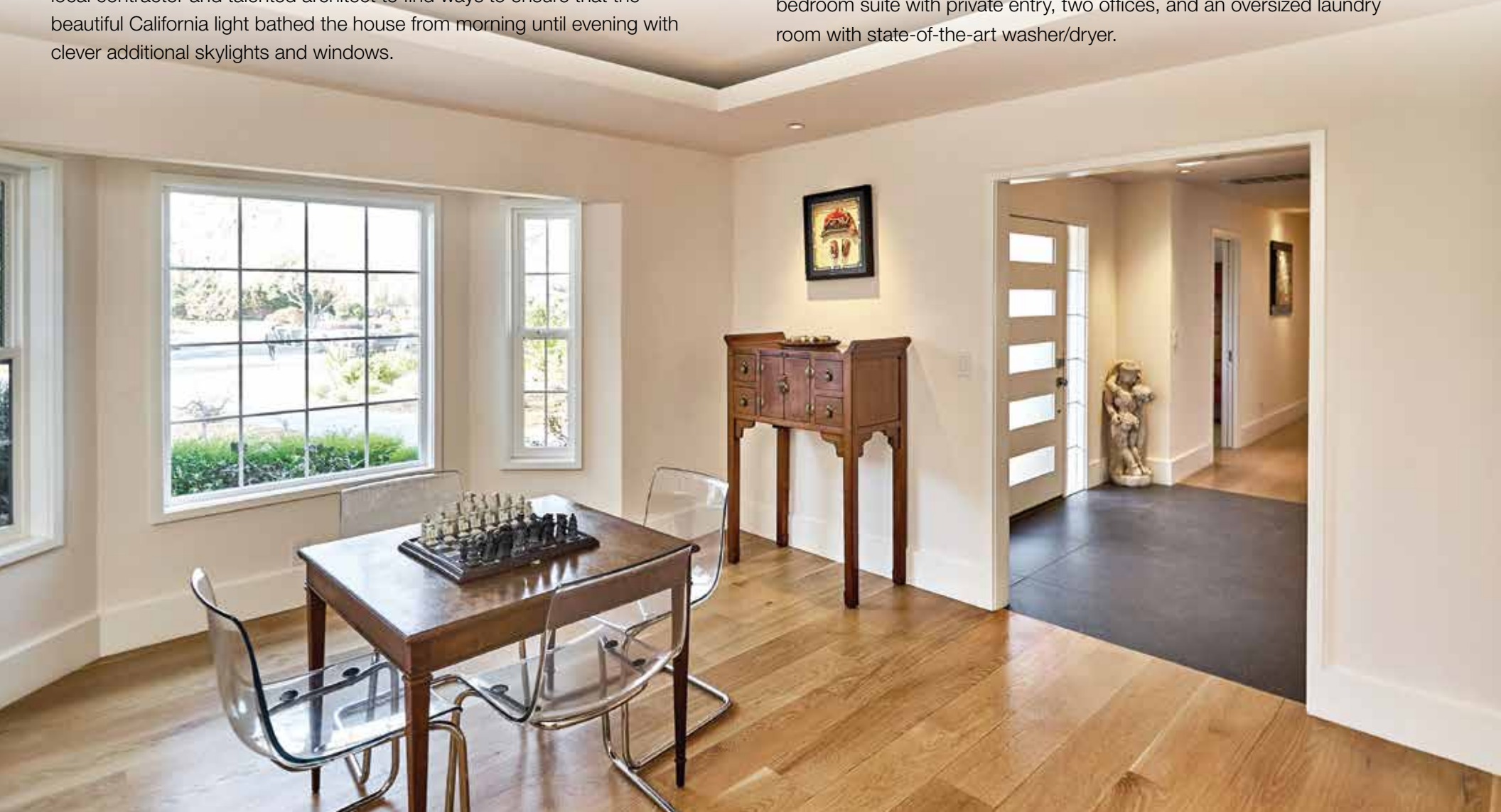




Light-Bathed Remodeled Ranch with Contemporary Appeal
19682 MONTAUK COURT, SARATOGA

Located in the highly sought-after Platinum Triangle neighborhood of Saratoga and within walking distance to top-rated Redwood Middle School and Saratoga High School. The Saratoga Library and the farmers market are just minutes away. Positioned at the end of a cul-de-sac on a .84-acre level lot is a lovingly rebuilt and expanded (approximately 4,800-square-foot) sprawling modern ranch home. The European owners updated every single space to create a meticulously designed masterpiece with no detail overlooked. Almost every wall, floor, fixture, and fitting is new and of exceptional quality and design – this is practically a brand-new house from floor to roof. The owners worked with an extremely experienced local contractor and talented architect to find ways to ensure that the beautiful California light bathed the house from morning until evening with clever additional skylights and windows.

The new expansion offers an open, light, collaborative living area for family and entertaining that makes this home truly unique. A high-ceiling family room includes technological wizardry that transforms the space into an exquisite theatrical retreat, while the huge custom kitchen – which gastronomes, chefs, and entertainers will love – features massive counter spaces, a unique bar, and the finest-quality lighting at any price. There is plenty of privacy and easy outdoor access throughout. The home is perfect for large parties with a superbly designed central dining area that opens via bifold doors to the oversized outdoor living and dining areas as well as the kitchen and family room. Completing this lovely single-level home is a guest bedroom suite with private entry, two offices, and an oversized laundry room with state-of-the-art washer/dryer.





AT A GLANCE

- 5 bedrooms with hardwood flooring, recessed lighting, and spacious new closet organization systems
- 3.5 bathrooms include sleek modern en suite master and guest bathrooms with custom features
- SieMatic kitchen from Europe with waterfall granite countertops, a central island with a prep sink that seats up to 8, and a custom bar and table
- Home entertainment theater features a fully integrated Elan system
- Pool and spa have been totally stripped and replastered with color quartz and new waterline tiles in 2017
- Secured with 6-camera Lorex system and burglar alarm with motion sensors
- Generous and clever storage throughout the home
- Oversized 3-car garage with designer ports
- Flooring throughout the home is highlighted by 2.5' x 2.5' imported European tiles and Tennessee white oak solid plank flooring
- New composition roof installed in 2014
- Fully landscaped, low-maintenance, high-utility garden with new irrigation system
- Approximately 4,391 square feet of interior space
- .84-acre lot





DETAILS OF THE HOME

Family Room/Living Areas

Carefully thought-out open floor plan with architectural detail and volume ceilings has a large picture window and skylights to accentuate the natural light entering the home. Also featuring state-of-the-art recessed LED lighting with Lutron shades.

Kitchen

With a SieMatic kitchen from Europe, the serious cook will find everything they desire to create gourmet meals. Waterfall granite countertops, a central island with a prep sink that seats up to 8, and a custom bar and table allow for easy cooking and entertaining.

The appliances include:

- Miele warming drawers, convection oven, steam oven, induction cooking, 5-pit gas cooking, dual-zone grill, and 2 dishwashers
- Built-in teppanyaki plate
- 2 Electrolux fridges (one for wine, one for beer)
- Liebherr built-in fridge and freezer

Bedrooms

This smartly designed home includes 5 bedrooms with hardwood flooring, recessed lighting, and spacious new closet organization systems.

Bathrooms

The bathrooms include sleek modern en-suite master and guest bathrooms with custom mirrors, glass door showers, and vanities.

Pool/Spa

The pool and spa have been totally stripped and replastered with color quartz and new waterline tiles in 2017. They are heated with solar and gas.

Entertainment

The home entertainment system is impressive. It features a fully integrated Elan system for all audio/visual. It also includes a 5-zone Sonos system with 8" paradigm speakers that enable listening to different music in all five zones if desired. The 4 TVs are all individually controllable through the Elan system with a plethora of inputs. The home theater system in the family room boasts a 4K JVC 3-chip D-ILA 3D projector with 56" and 126" motorized screens that are both fully retractable into the ceiling. Automatic Lutron blackout shades are positioned in the theater and family room. The surround sound system includes 2 Sunfire 10" subwoofers and a Leon 2kW built-in sound bar and 6 paradigm speakers.

Storage/Closets

Generous and clever storage throughout the home.

Security

This home is secured with a 6-camera Lorex system and burglar alarm with motion sensors throughout.

Flooring

The flooring throughout the home is highlighted by 2.5' x 2.5' imported European tiles and Tennessee white oak solid plank flooring.

Doors

You will find solid wood with 5-section glass and paneled theme doors throughout the home. The kitchen has a multi-pane folding door that opens up to the entertainment deck, pool, and landscaped garden.

Windows

The home features new double pane energy-efficient windows throughout.

Roof

A new composition roof was installed in 2014.

Heating

New radiant-heated floors in the kitchen and guest bathroom are individually controllable through a timed thermostat.

Plumbing

This home includes two Navien tankless water heaters. All metal piping in the home was replaced in 2014.

Cooling

Multi-zone air conditioning via 2 separate condenser units are independently controlled through Lutron thermostats that include app control. The cooling system also offers 2 eco-friendly whole-house fans as an alternative to air conditioning.

Lighting

The lighting is designed by San Francisco-based Auerbach-Glasow with the majority having LED Lucifer lighting fixtures, which is the light source used in the San Francisco Museum of Modern Art and Van Gogh. The system features Lutron RadioRA lighting control using scene setting.

Electrical

There is an EV charge point in the garage (240V/40A) with an option for a second.

Garage

An oversized 3-car garage with designer ports also has 2 extra doors toward the backyard for possible future extension or boat parking.

Utility Room

A laundry sink alongside expansive storage with custom cabinets, countertops, and high-efficiency washer and dryer with exterior entry perfect for pet access.



Landscape/Hardscaping

Fully landscaped, low-maintenance, high-utility garden with new irrigation system for side and back gardens. New deck, fencing, patios, driveway, walkways, lawn, and plantings. Front yard landscaping with custom low-flow drip system, wired for low voltage lights. Fully sprinklered and drip system. 17 fruit trees including, peach, orange, apricot, cherry, 2 different apple trees, lemon, mandarin, nectarine, plum, and pear.





Bill Gorman

Over \$1.8 Billion in Sales
One of the Top Realtors
per The Wall Street Journal, 2007-2017

408.872.3555
BGorman@cbnorcal.com
BillGorman.com

CalRE#01053691



GLOBAL
LUXURY.

Arthur Sharif

650.804.4770
Art.Sharif@sothebshomes.com
CalRE#01977151

Sotheby's
INTERNATIONAL REALTY

